

Latest hard/software version

FA 350/500

Features

- Reference docking only when starting up
- Detection of knife size is programmable
- Grinder travels with knife
- Position for roll length kept in memory
- Auto detection of fabric roll size
- Counter for total number of cuts
- Delay of cooling spray can be set
- Time for knife position to the shaft is changable
- Setting of knife position to shaft by touch panel display
- Set knife position to paper core by touch panel display
- Set photo cell position to paper core by touch panel display
- Wrapping mode (option)
- Rewinder mode (option)
- Manual cutting mode, move at preset width by pushing start button
- Display with USB connection
- Auto calculating of possible cuts to reduce waist of fabric

Main Screen 8,5" Color Touch Panel Display

Full visual view and control of settings.



Manual Cutting Mode

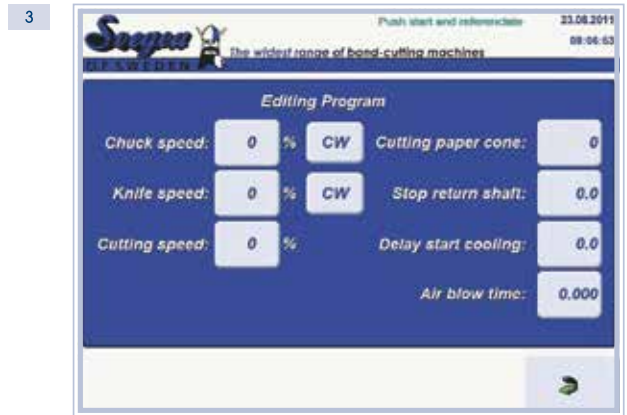


3 programmes, each handles up to 3 preset cut widths and number of cuts per cycle.



Program Settings: Editing Program

Very easy editing of program settings.



Possible to use different fabric shaft sizes.



Automatic Cutting Mode

Full vision control of process.



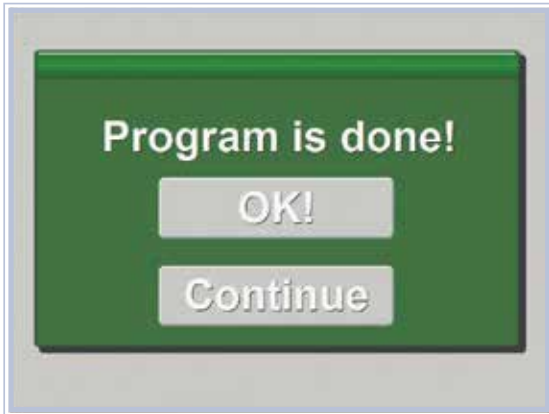
If last band width is less than preset width, choose of width of last band roll can be set.

OR

Auto calculating of possible cuts to reduce waist of fabric.



4b



Trouble Shooting

Easy visual overview and testing of I/O functions.

7



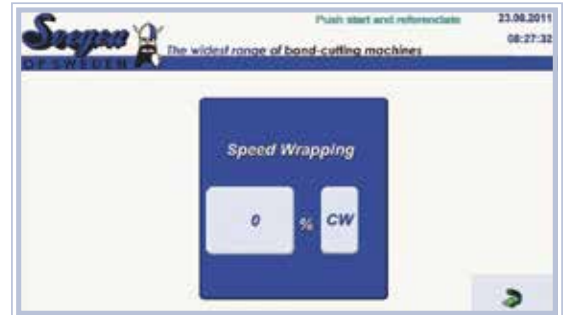
Grinding Mode

5



Options

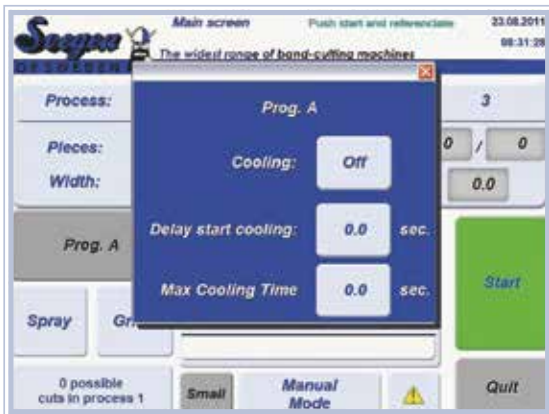
8



Wrapping

Cooling System

6



8a



Rewinding

Technical Data FA 350/500

| | |
|---------------------------------|--|
| Maximum operation width | 2000 mm (78")* |
| Maximum roll diameter | 300 mm (11 1/2")** / 400 mm (15 3/4")*** |
| Diameter of cutting blade | 350 mm (13 3/4")** / 500 mm (20")*** |
| Diameter of fabric shaft | 48 mm (1 7/8")* |
| Card board tube inside diameter | 50 mm (2")* |
| Cutting accuracy | +/- 0,01 mm |
| Air pressure | 6 bar min. |

Motors

| | |
|----------------------|-----------------|
| Motor – chuck | 1,1 kw / 1,5 kw |
| Motor – Cutter blade | 1,5 kw / 2,2 kw |
| Motor – grinder | 0,18 kw |

Power

230 V, single phase, 50/60 cycles

Machine dimensions

| | |
|-------------------------|-------------------------------------|
| Length / Width / Height | 325 / 150 / 156 cm (130 / 59 / 61") |
| Net weight | 860 Kg |

Options

- Auto-Chuck, Pneumatic
- Blade cooling system

* Other dimensions on request

** FA 350mm

*** FA 500mm

Specifications and appearance are subject to change without prior notice for improvements.



Svegea of Sweden AB

Junogatan 5, SE-451 42 Uddevalla, SWEDEN

Tel: +46 522 368 00 • Email: info@svegea.se • Website: www.svegea.se