

True Drive II

NEW PLC - control &
Speed - synchronization
of fabric turn-table

For the Collarette series



Contents

Collarette Cutting Machines	6
Features	7
6" Color Touch Panel Display	8
Running Mode	10
Set Up	14
Fabric	16
Info	18
Archives	20
Alarm	22
Trouble Shooting	24
Service Interval	26
Service	30



EC 100



EC 200



EC 200-C



EC 200-CS



EC 300



EC 300-S



EC 300-XS

Features

- 6" Touch Screen
- Intergrated system - less hardware/control buttons
- Full visual view and control of settings
- CANopen PLC/Inverter System
- Display with USB connection
- Very user friendly software
- All settings can be stored under index
- Date can be set for individual fabrics and giving full production output in meter/yard (including Stretch compensation) as well as kg/pound
- Calculation of production effeciency
- Production date stands in archives for analyzing
- Operator log-in
- Easy trouble-shooting and simulation of inputs/outputs on display
- Service intervals can be set including reminder

6" Color Touch Panel Display

Main Screen

Full visual view and control of settings.



Running Mode

Running Mode

Production by weight or length.

Soegen
OF SWEDEN

Running mode

Drive 1 emergency stop

07.05.2013 11:57:11

Speed

Speed +

Max

0 %

Speed -

Min

Fabric stretched

0 %

Weight band roll

0 Pound

Weight band roll

0 Pound

Slave speed +- 400

Auto mode

No Sync

Roll stop

Warning icon

Running mode

Setup

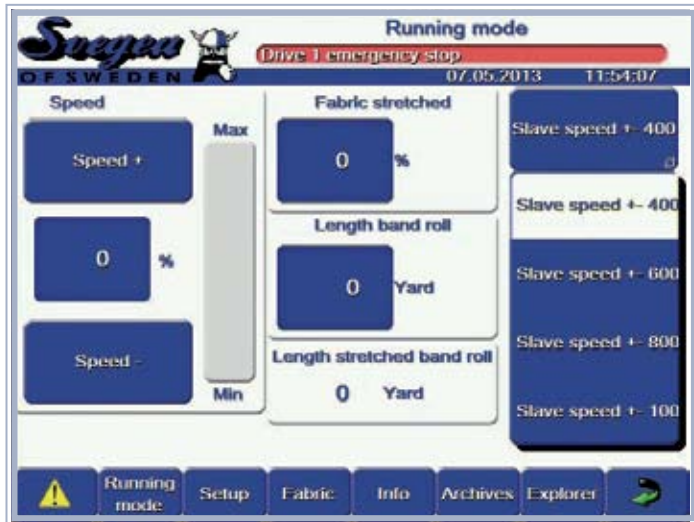
Fabric

Info

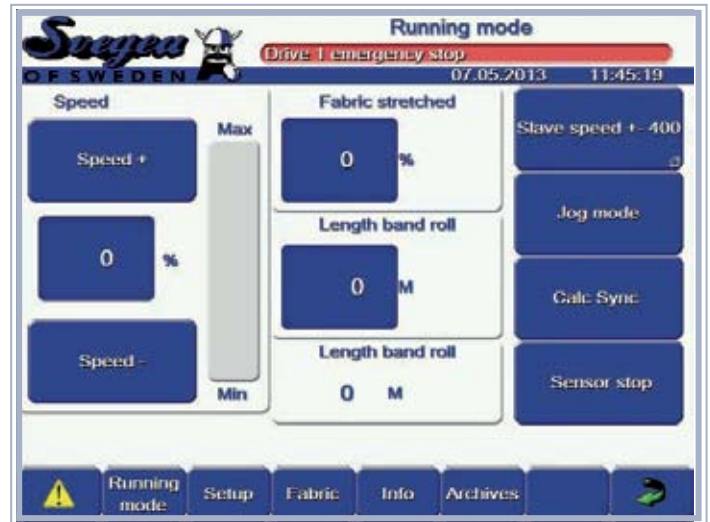
Archives

Explorer

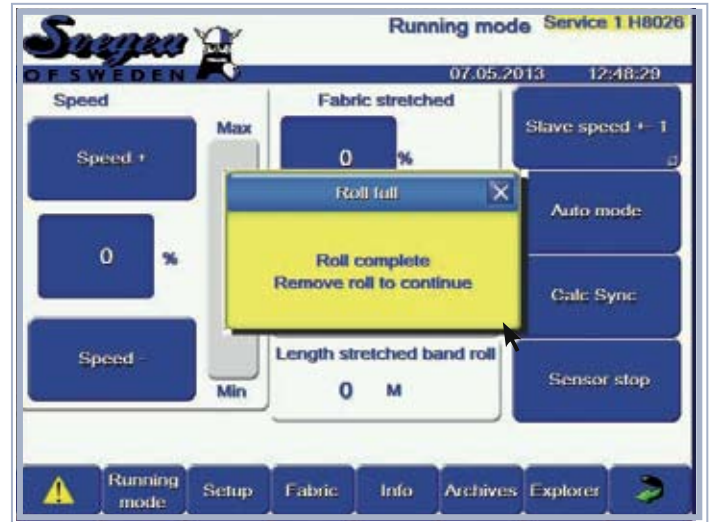
Refresh icon



Yard



Meter



Pop - up windows

Set Up

Set Up Log-in.

Svoegen
OF SWEDEN

Setup

Drive 1 emergency stop

07.05.2013 12:00:33

Speed

Speed + Max

0 %

Speed - Min

User

User 1

User 2

User 3

User 4

Operator Log-ins

Slave speed +- 400

Calc New Sync

Calc Sync

Reset stop length / weight

Running mode Setup Fabric Info Archives Explorer

Fabric

Fabric

Setting of cutting and fabric data (inch/cm).

Svegen
OF SWEDEN

Fabric

Drive 1 emergency stop

07.05.2013 12:01:48

Fabric width 0.00 Inch	Fabric name 0	Fabric density 0 Oz/Yard ²
Fabric stretched 0 %		Fabric weight 0 Pound
Band width 0.00 Inch	Numbers of bands 0 Bands	Total Width 0.00 Inch

Running mode Setup **Fabric** Info Archives Explorer

Info

Info

Setting of required length/weight per cut roll and production output including wastages (trim).

Svegea
OF SWEDEN

Info Service 1 H8026

Drive 1 emergency stop

07.05.2013 12:03:15

Weight band roll
0 Pound

Weight band roll
0 Pound

Length stretched band roll
0 Yard

Fabric total length
0 Yard

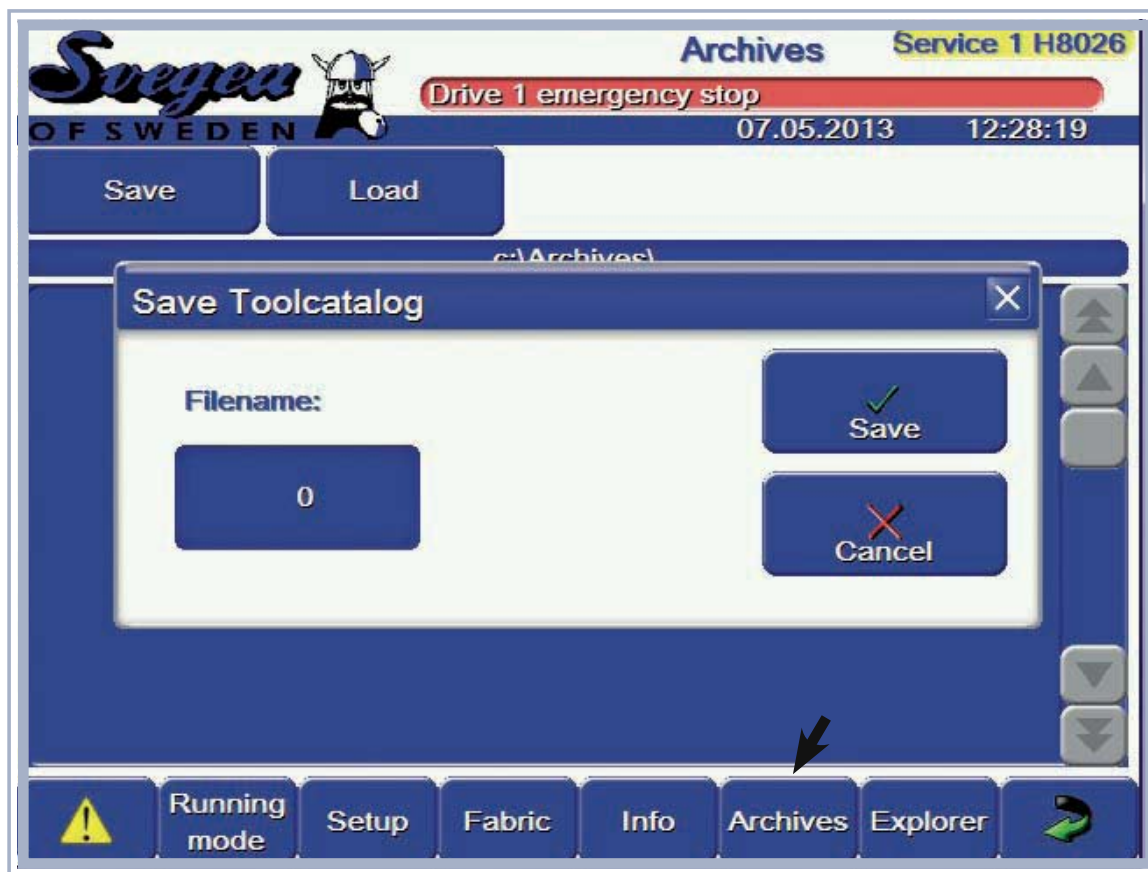
Trim
0 Pound

Running mode Setup Fabric **Info** Archives Explorer

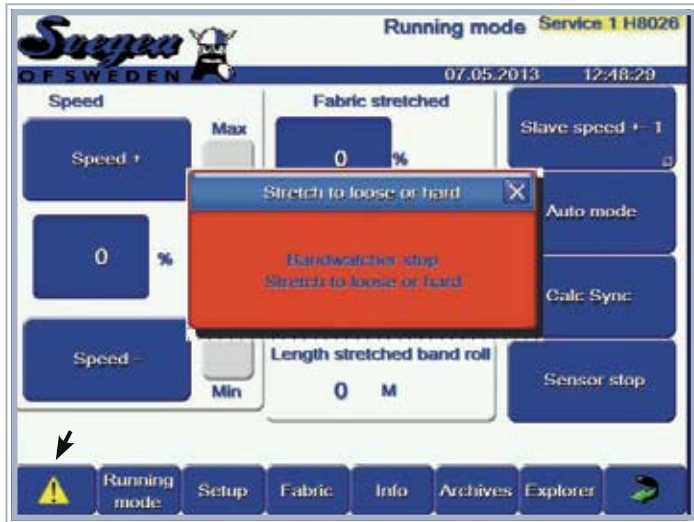
Archives

Archives

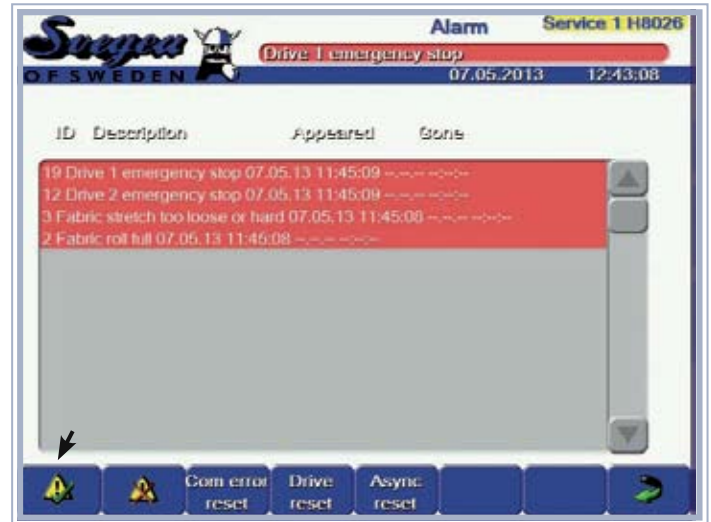
Saving of settings and production data.



Alarms



Pop - up window



Alarm log

Trouble Shooting

Trouble Shoot

Input/Output – Full control and easy visual testing.

Svegen
OF SWEDEN

Inputs outputs Service 1 H8026

Drive 1 emergency stop

07.05.2013 12:32:34

Stop Button	Master puls A	Master puls B	Drive On
Start Button	Slave puls A	Slave puls B	Alarm
Speed + sync	Speed + no sync	Roll Complete	
Speed - sync	Speed - no sync	Stretch Sensor	

! Main Service **Inputs Outputs** Service interval ↻

Service Interval

Service Interval

4 different settings for service intervals and reminders.

Saegea
OF SWEDEN

Service interval

Drive 1 emergency stop

08.05.2013 08:30:44


Service	Service interval	Warning
Service 1 H8026	0 10h	0 H
Service 2 X9980	0 10h	0 H
Service 3	0 Day	0 Day
Service 4	0 Day	0 Day

Days Service 1 done Service 2 done Service 3 done Service 4 done

! Main Service Inputs Outputs Service interval ↻

Service 1 H8026: red color bar for service.


Service 2 X9980: yellow color bar for warning reminder.

Svergea OF SWEDEN  **Service interval Service 1 H8026**

Drive 1 emergency stop 08.05.2013 08:33:42

Service	Service interval	Warning	Service interval	Warning
Service 1 H8026	20 10h	100 H	0 Month	0 Month
Service 2 X9980	20 10h	100 H	0 Month	0 Month
Service 3				
Service 4				

Months Service 1 done Service 2 done Service 3 done Service 4 done

! Main Service Inputs Outputs Service interval 



Pop - up windows



Service	Service Interval	Warning
Service 1 H8026	20 10h	100 H
Service 2 X9980	0 Month	0 Month

Service 1 H8026

Service 2 X9980

Service 1 done

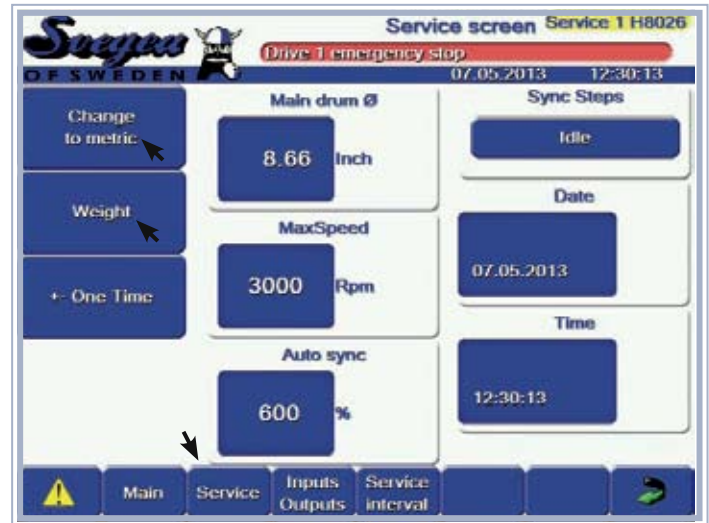
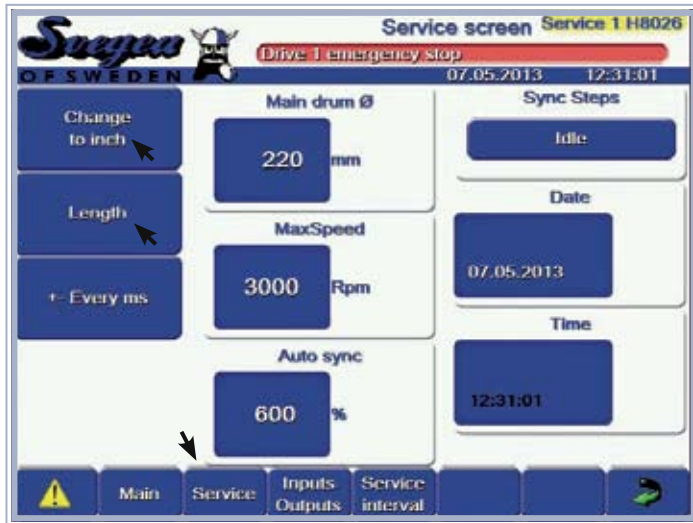
Service 2 done

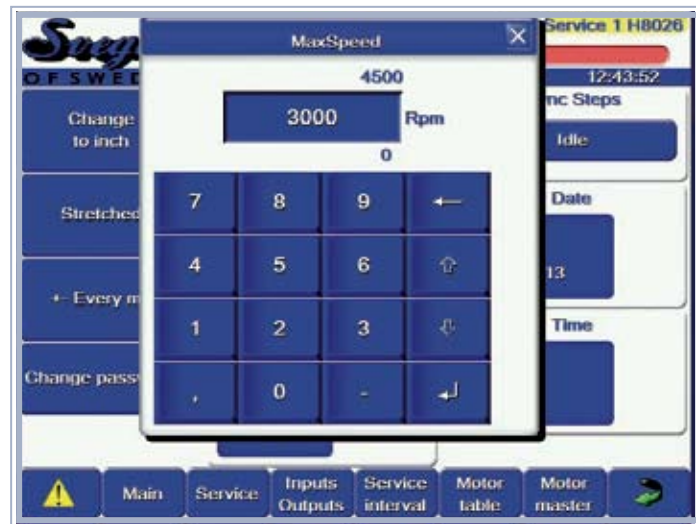
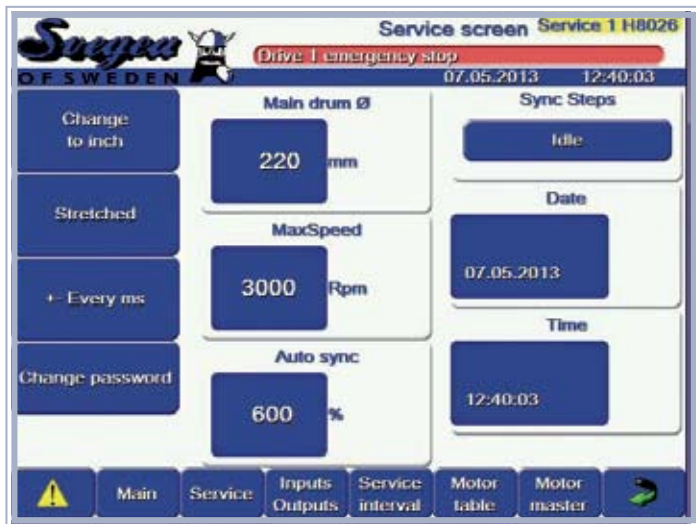
Main Service Inputs Outputs Service Interval

Service


Service

Measurement options.





Machine Settings

Svegr  **Motor Table** Service 1 H8026

Drive 1 emergency stop

07.05.2013 12:41:31

Transmission 2	Acc	Drive OpMode
50 Ratio	2 Sec	_CAN_INIT
Wheel1	Dec	Acync Mode
86 mm	2 Sec	READY
Wheel2	Pulses per revolution	Drive 2
86 mm	48 Puls	AutoOff
		Change direction

⚠ Main Service Inputs Outputs Service interval Motor Table Motor master 🔄

Svegr  **Motor master** Service 1 H8026

Drive 1 emergency stop

07.05.2013 12:42:27

Transmission 1	Acc	Drive OpMode
20 Ratio	2 Sec	_CAN_INIT
Wheel1	Dec	Acync Mode
57 mm	2 Sec	READY
Wheel2	Pulses per revolution	Drive 1
87 mm	48 Puls	AutoOff
		Change direction

⚠ Main Service Inputs Outputs Service interval Motor table Motor master 🔄

Motor Settings

Specifications and appearance are subject to change without prior notice for improvements.

Svegea of Sweden AB Junogatan 5, SE-451 42 Uddevalla, SWEDEN

Tel: +46 522 368 00 • Fax: +46 522 333 99 • Email: info@svegea.se • Website: www.svegea.se

